

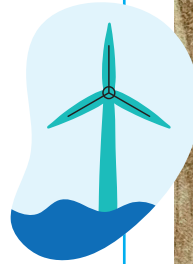
CLIMATE CHANGE WITH THE SCIENCE MUSEUM GROUP

EPISODE 5: WHAT WILL FOOD BE LIKE IN THE FUTURE?

Questions inspired by a new series of videos from the Science Museum Group about how science is helping us tackle climate change

THE FOOD PROBLEM

- What fraction of greenhouse gas emissions produced by humans are caused by food?
- Why is food a problem for global warming? What type of food is the worst for emissions?
- Why are cows so bad for the planet? Think of two reasons that are featured in the video and discuss them with your partner.
- How is methane produced from cows? Draw a diagram to show the process.



INGENIOUS SOLUTIONS

- What are some clever ways people are making alternatives to meat?
- What do Redefine Meat use to make non-meat look and taste like real meat?
- Would you eat fake meat that had been made by a 3D printer? Or try insects?
- How many young people today are either vegan, vegetarian or only eat fish? You could do a vote in your class to see if it's about the same amount.
- Aside from helping the planet, what are some other reasons people choose to eat less or no meat?



Food For Thought!

Would you consider cutting down on the amount of meat you eat? Or if you already don't eat meat, can you explain why?



Watch this video at [first.news/science-museum-food](https://www.first.news/science-museum-food)